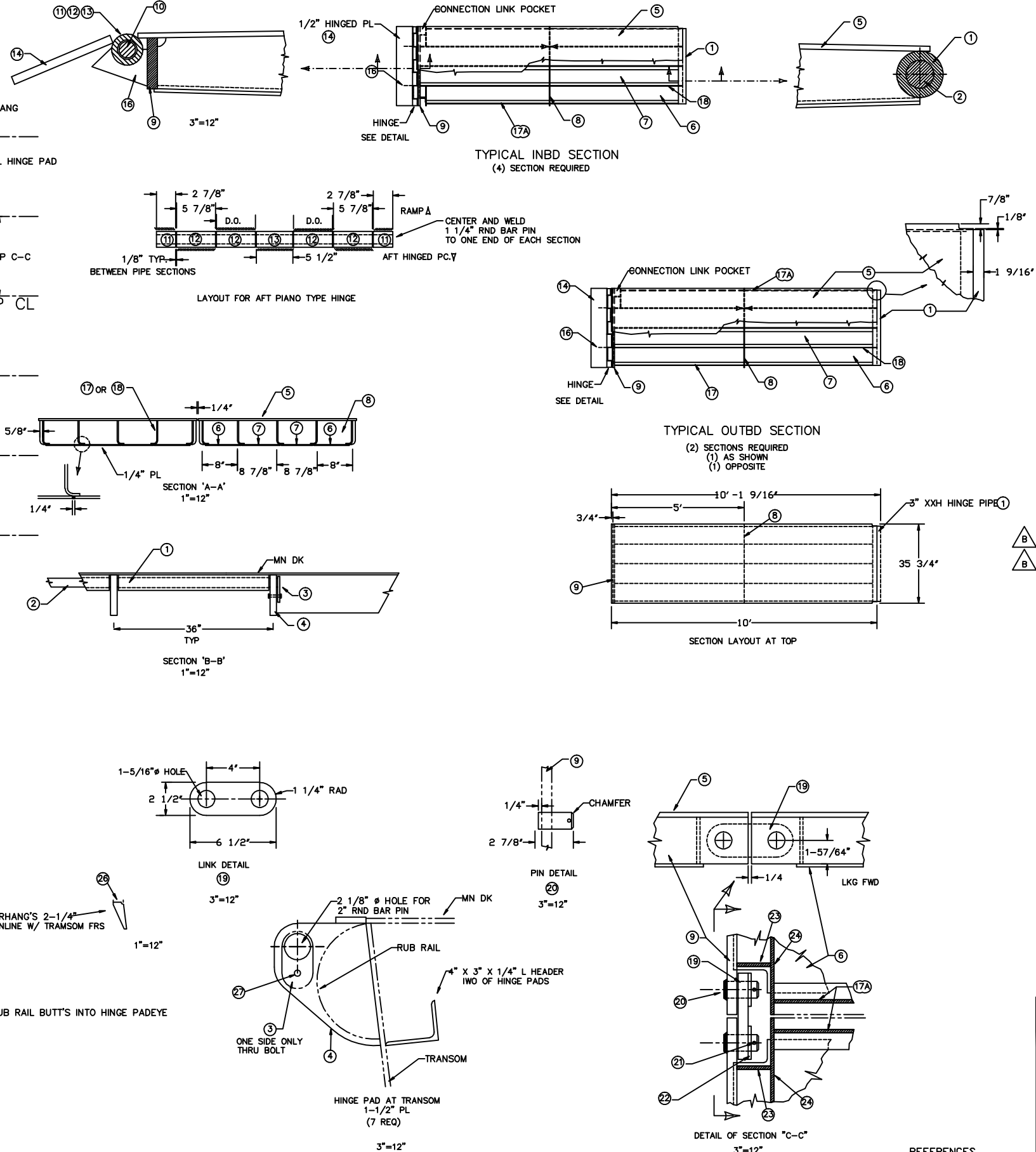
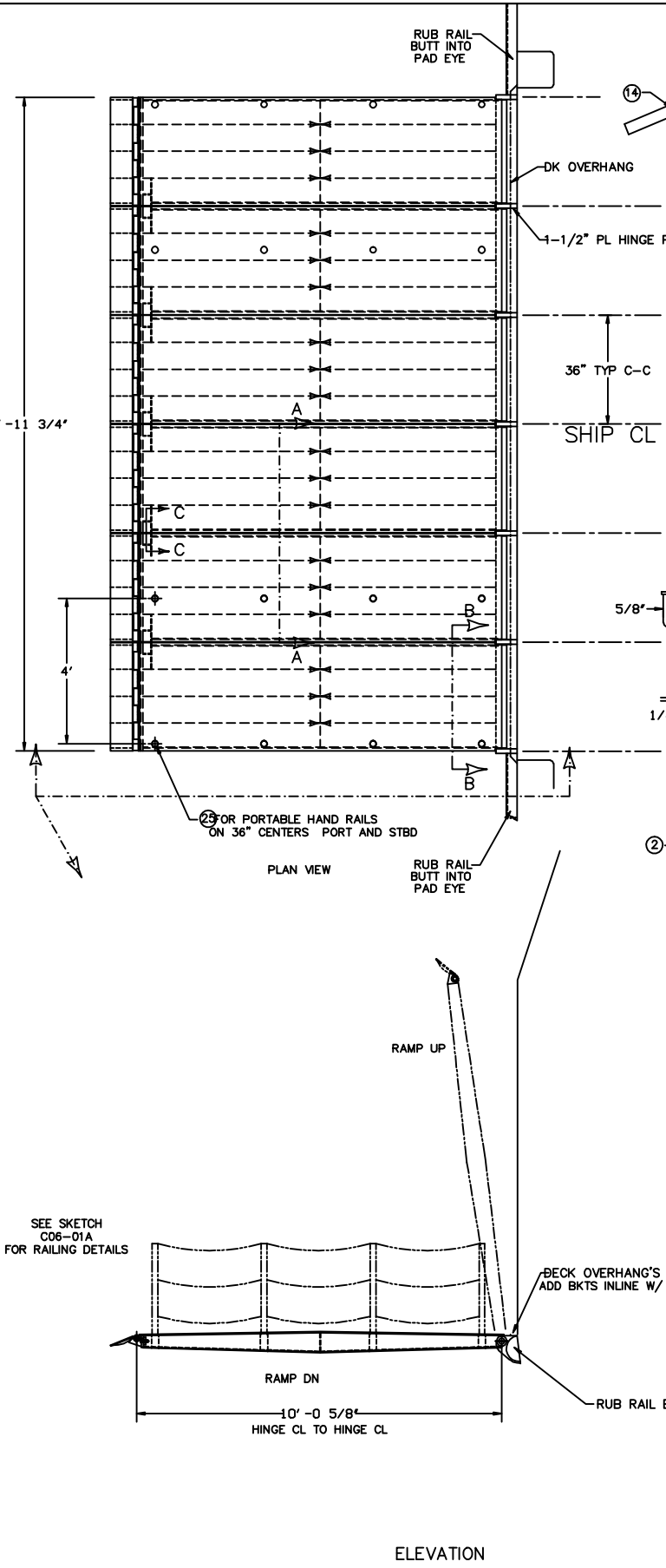


This drawing is the property of WASHBURN & DOUGHTY ASSOC. Inc and is to be used only by them. Any disclosure, reproduction or other use of it is expressly prohibited unless specifically authorized in writing. Any unauthorized use of this drawing will be considered a violation of property rights and appropriate action will be taken.



MATERIAL LIST		
PC. No.	QTY	DESCRIPTION
1	6	3" XXH PIPE 34" LONG
2	1	2" RND BAR 18"-2" LONG
3	1	1/2" PL RETAINING CAP
4	7	1 1/2" PL HINGE PAD
5	6	3/8" PL TOP 10' X 2'-11 3/4"
6	12	1/4" PL BOTTOM STRIP 7 7/8" X 9'-9 11/16"
7	12	1/4" PL BOTTOM STRIP 7 1/8" X 9'-9 11/16"
8	6	1/4" PL 6 7/16 X 2'-11 1/4"
9	6	3/4" PL END 3 13/16" X 2'-11 3/4"
10	6	1 1/4" RND BAR 35 9/16" LONG
11	12	2" XXH PIPE 2 15/16" LONG
12	24	2" XXH PIPE 5 7/8" LONG
13	6	2" XXH PIPE 5 1/2" LONG
14	6	1/2" PL 28" X 2'-11 3/4"
15		DELETED
16	12	5/16" PL
17	20	1/4" FLG'D PL WEB
17A	10	1/4" FLG'D PL WEB
18	30	1/4" FLG'D PL WEB
19	5	1" PL LINK 6 1/2" X 2 1/2"
20	10	1-1/4" RND BAR 2 7/8" LONG
21	20	1/4" X 2 1/2" S.S. COTTER PIN
22	20	1-1/4" FLAT WASHER S.S.
23	10	1/4" PL 3 7/8" X 2 9/16"
24	10	1/4" PL 3 7/8" X 8 7/8"
25	8	2" SCH 40 PIPE CUT TO SUIT
26	1	2 1/4" X 1/2" PL 18"-8" LONG
27	1	1/2" X 3" BOLT S.S.
28		
29		

D	MADE FLAPS LONGER (PC 14)	
	RELEASED FOR CONSTRUCTION	
C	REVISED AS PER REMARKS TGM REVIEW OF	2-3-97 2-10-97
B	REVISED LINK PINS TO SUIT OWNER COMMENT	
A	SUMMITTED FOR APPROVAL	1-6-97
REV	DESCRIPTION	DATE

WASHBURN & DOUGHTY Assoc inc  
EAST BOOTHBAY, ME

130' PASSENGER/VEHICLE FERRY

RAMP

DRWN BY JCH DATE 12/16/96 SCALE 1/2"=1' OR AS SHOWN  
CHK'D BY DATE  
APP'D BY TGM INC. DATE 2-3-97 PLAN No. H56-C06-01 REV D

REFERENCES

Ramp Photos:



Ramp Key



Ramp Pin



Ramp Pin